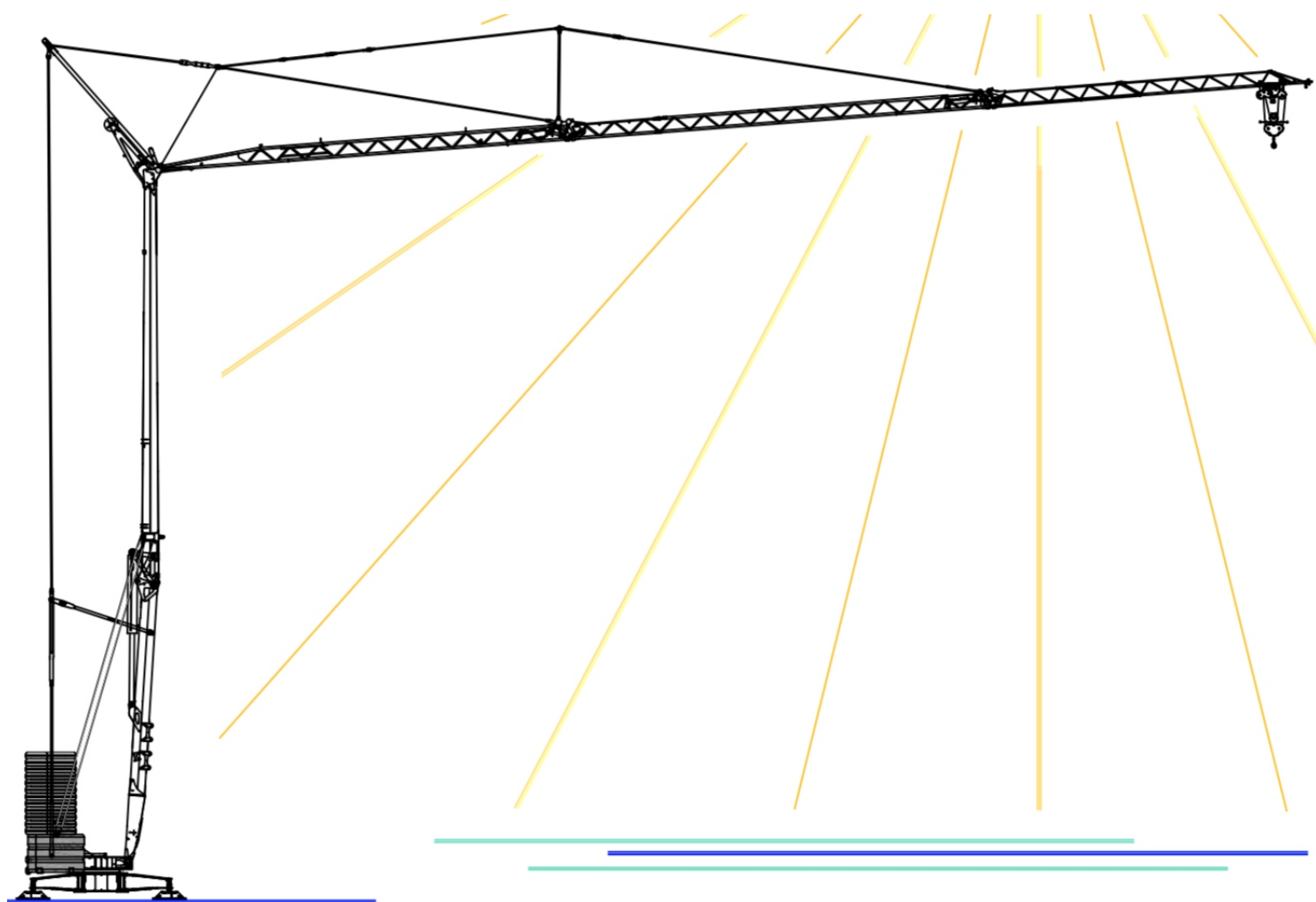


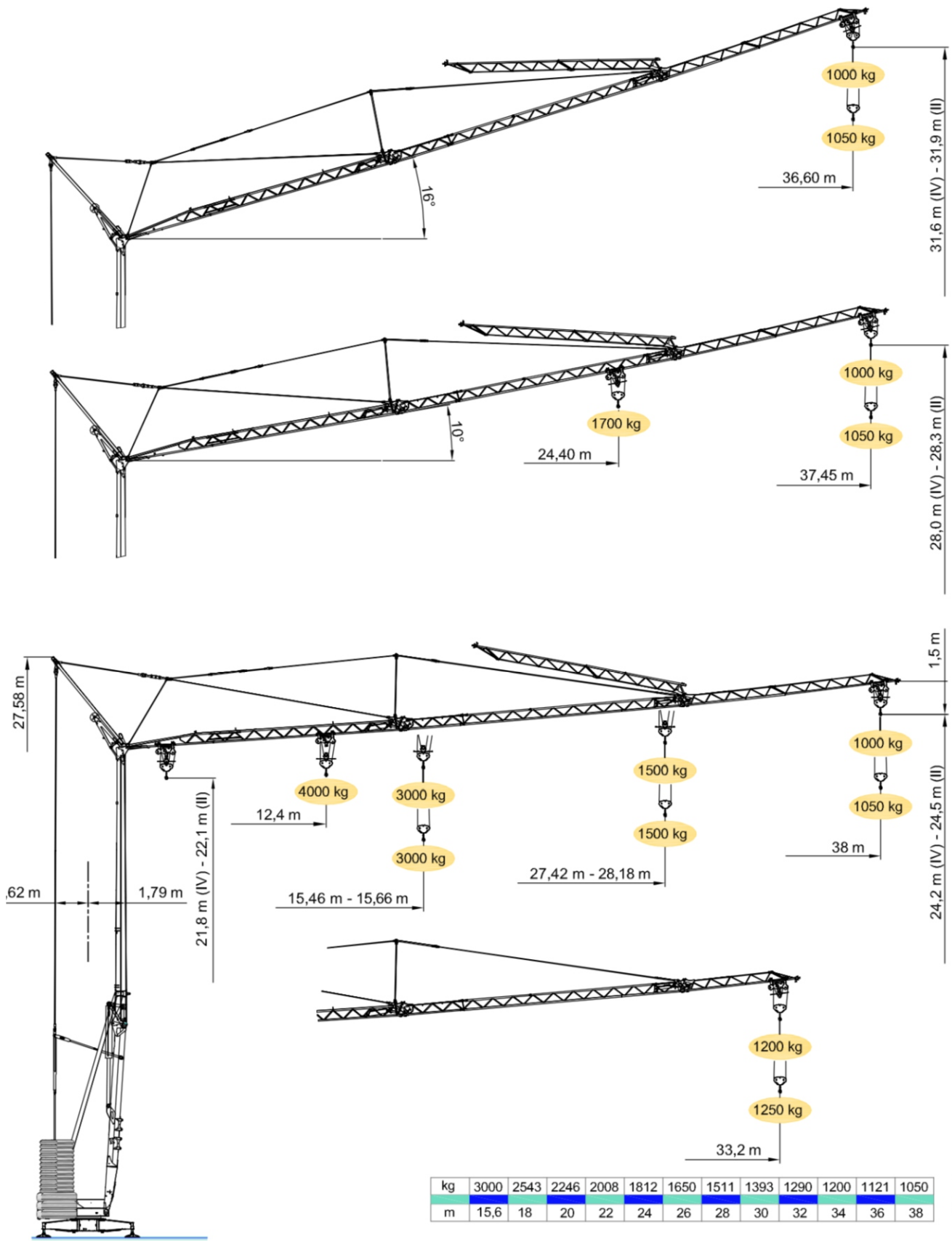
VICARIO OMV 370



Oficjalny dystrybutor na Polskę




Zakłady Mechaniczne Vicario S.p.a.
Specyfikacja może ulec zmianie bez wcześniejszego powiadomienia.



kg	3000	2543	2246	2008	1812	1650	1511	1393	1290	1200	1121	1050
m	15,6	18	20	22	24	26	28	30	32	34	36	38

kg	4000	3384	2877	2496	2198	1959	1764	1600	1462	1344	1241	1150	1071	1000
m	12,2	14	16	18	20	22	24	26	28	30	32	34	36	38



 Wyposażenie seryjne

4 prędkości (biegi) podnoszenia sterowane płynnie falownikami, 3 prędkości obrotu i wodzenia sterowane falownikiem, ocynkowana konstrukcja i naciągi, balast, unoszony wysięgnik, wózek z silnikiem i wyłącznikiem krańcowym umieszczonym u podstawy wieży, możliwość pracy ze skróconym wysięgnikiem, wbudowane sterowanie radiowe, przycisk awaryjny, ostona chroniąca łożysko oporowe i mechanizmy, przygotowanie do samobalastowania, skrzynka elektryczna ze stali nierdzewnej, dokumentacja zgodna z normami EWG

 DOTAZIONE DI SERIE

Sollevamento "overdrive" a quattro velocità con inverter, rotazione e carrello a tre velocità con inverter, zincatura della struttura e dei tiranti, contrappeso, braccio impennabile, carrello rampante con motore e finecorsa alla base della torre, funzionamento con braccio ripiegato, comando a pulsantiera via cavo, carter di protezione per ralla e meccanismi, predisposizione per autoavvornamento e radiocomando, armadio elettrico in acciaio inox, documentazione a norme CEE.

 STANDARD FEATURES


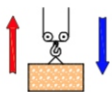




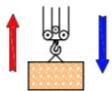




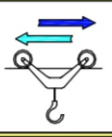



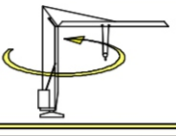



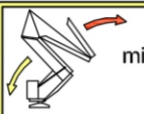




4-speed lifting, 3-speed rotation and trolley with inverter control, galvanised structure, counterweight, pull-up jib, translation trolley with motor and limit switch at base of gantry, operation with folden jib, cable-operated pushbutton remote control, guard for slewing ring and mechanisms, designed to allow installation of self-ballasting device and radio control, stainless steel electrical cabinet, documentation in accordance with EU standards.

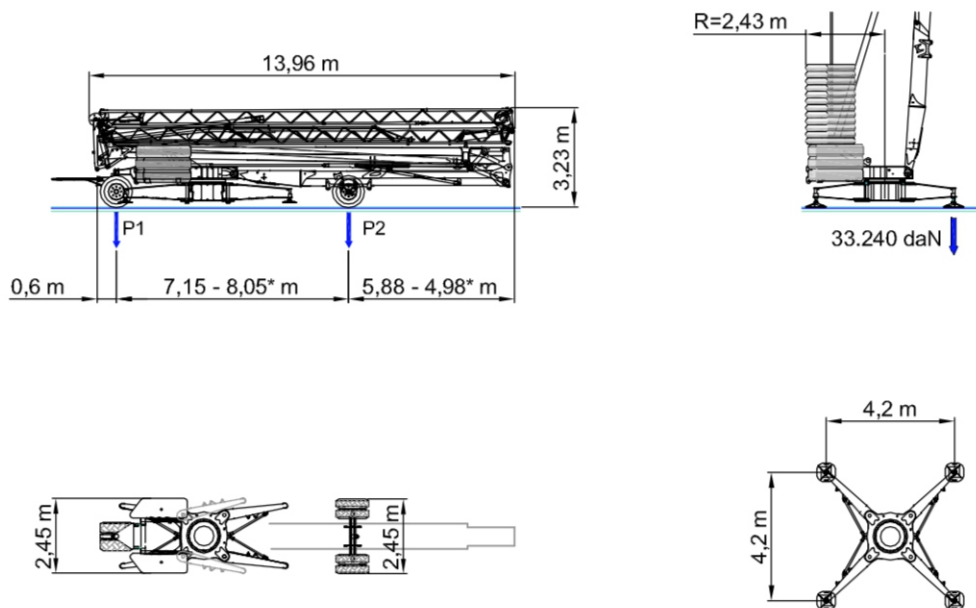
 EQUIPEMENT DE SERIE

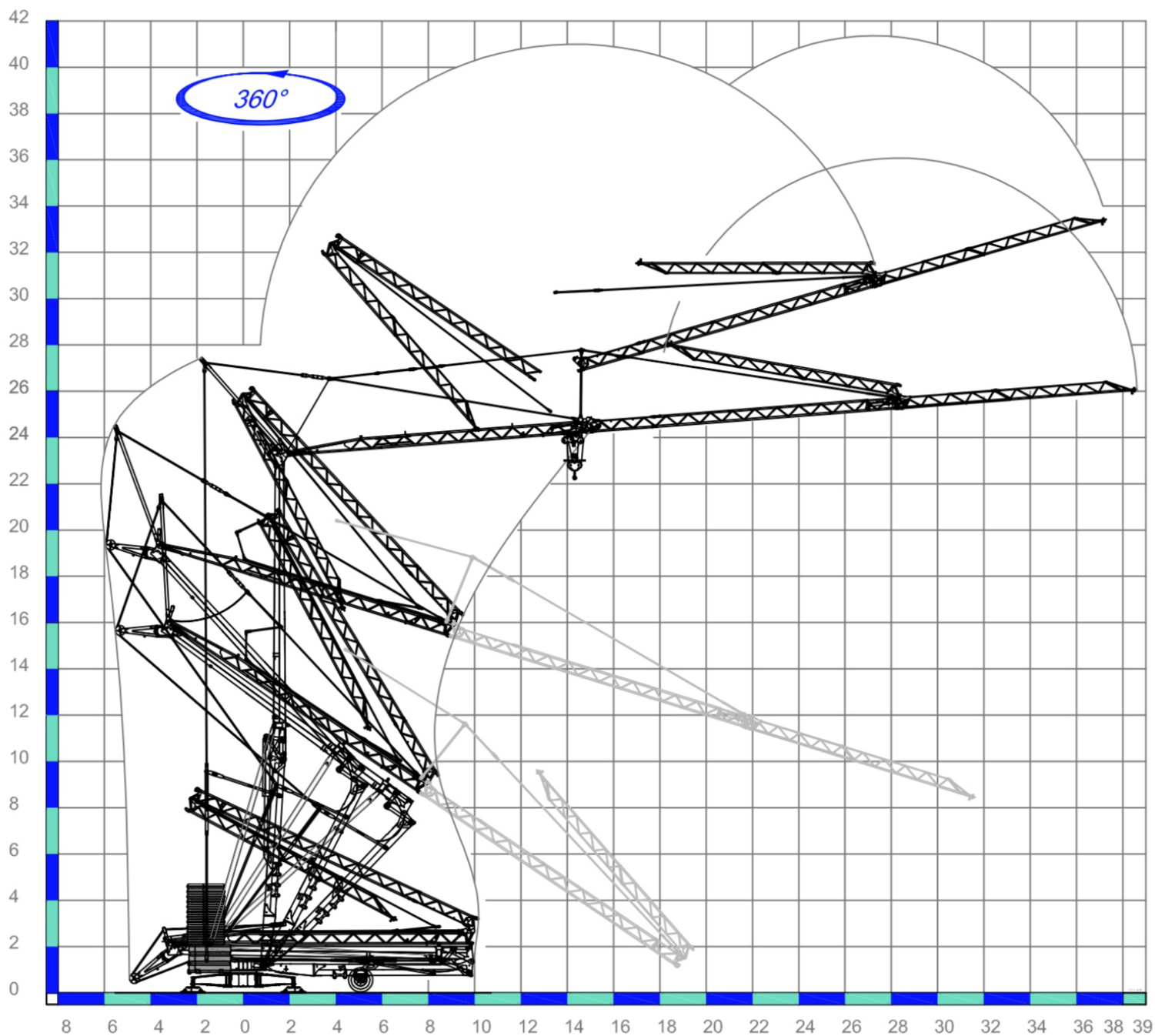
Levage à quatre vitesses, chariot et rotation à trois vitesses à contrôle électronique, galvanisation de la structure et des tirants, contrepoids, flèche relevable, moteur de chariot et fin de course à la base de la tour, fonctionnement bras replié, commande par câble, carter de protection pour la couronne et les mécanismes, predisposition pour autolestage et commande radio, armoire électrique en acier inox, documentation conforme aux normes CEE.

 SERIENAUSSTATTUNG

Heben mit vier Geschwindigkeiten, Laufkatze und Rotation mit drei Geschwindigkeiten, Strukturverzinkung, Gegengewicht, hochklappbarer Arm, aufsteigender Wagen mit Motor und Anschlag an der Basis des Turms, Funktionieren mit eingeklapptem Arm, Steuerung mit Druckknopftaste via Kabel, Schutzvorrichtungen für Drehverbindungen und Mechanismen, Vorbereitung für Selbstballasteinahme und Funksteuerung, elektrischer Schrank aus rostfreiem Stahl, Dokumentation gemäß EC Vorschriften.

	400V (±10%) 50 Hz		12kVA			
	m/l'					
kg	8	20	46	56		
kW	3000	3000	1200	800	11 (Inverter)	
	m/l'					
kg	8 - 4*	20 - 10*	46 - 23*	56 - 28*		
kW	2000 - 4000*	2000 - 4000*	1200 - 2400*	800 - 1600*	11 (Inverter)	
	m/l'					
kW	17.8	28.6	53.5 (↗39.3)		3 (Inverter)	
	n/l'					
kW	0.17	0.42	0.88		3 (Inverter)	
	min			16.845 kg		8.100 kg + 18.000 kg
	8100 kg	5400 kg	2700 kg	0 kg		
P1	11945 kg 10300 kg*	9765 kg 8200 kg*	7605 kg 6105 kg*	5425 kg 4000 kg*		
P2	13000 kg 14645 kg*	12480 kg 14045 kg*	11940 kg 13440 kg*	11420 kg 12845 kg*		





International Machinery Stock

ul. Rogowska 9
 54 -440 Wrocław
 tel. +48 71 715 61 03
 e-mail: biuro@ims24.pl
 www: ims24.pl

Pieczętka:

